



GS-Smart Ground Mounting System Solution

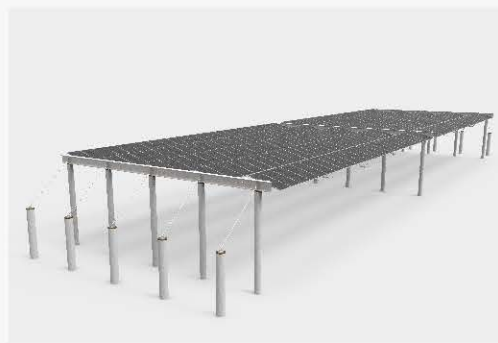
FLEXIBLE MOUNTING SYSTEM

● **System Introduction**

Grace Solar-Smart Flexible mounting solution is an architectural form that fix solar modules between the buildings .It has significant advantages when applied in large span areas, such as rivers, sewage treatment plants, orchard nursery and other areas where continuous pile posts cannot be placed. Through the four installation methods of hanging, pulling, hanging and bracing, the Grace Solar-Smart Flexible mounting solution can be installed freely in many directions, which can better improve the support method of distributed solar power plant especially C&I markets.



Flexible Mounting System



Flexible Mounting System II

● **Features**

- The span is 10-30 meters, better environment
- Reduce the consumption of steel structure and qty of pile post to reduce cost and increase efficiency.
- Easy installation.
- Safe, reliable and trustworthy

● **Suitable Power Plant Project**

Suitable for plant where ;large span and hard to posts.



Barren Hill



High Way



Rivers



Landfill



Sewage Treatment Plant

● **Technical Information**

Installation site	Ground
Angle	10° , 15° , 20°
Material	Steel or Stainless Steel
Color	Natural color or customized
Surface treatment	HDG or ZAM

Wind speed	≤60m/s(3S) or ≤1KN/m ²
Snow cover	≤2KN/m ²
Reference standards	GB50009&ASCE7-10 & Other
Usage time	More than 25 years
Quality assurance	10-year quality assurance